

Use Cases

With its wireless monitoring, clear LCD display, industrial-grade sensors and online access to data, the WS1 Pro has been used to give peace of mind in numerous settings including smart home, agriculture management and inventory monitoring.



Baby Room



Smart Home



Greenhouse



Museum



Cigar Cabinet



Making Sense of Your World

Vertrieb durch:



BMC Solutions GmbH
Boschstr. 12 • 82178 Puchheim
Tel. 089-800694-0 • Fax 800694-29
www.bmc.de • info@bmc.de

Contact Us

UbiBot Website: www.ubibot.io
Manufacturer Website: www.cloudforce.cn/en
Email: support@ubibot.io



WS1 Pro—the Smartest Multi-Sensor IoT Device

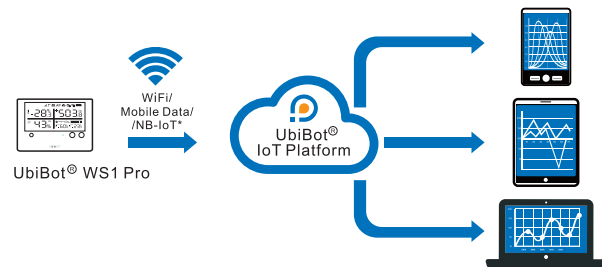


Making Sense of Your World

Introduction

The UbiBot® WS1 Pro is a state-of-the-art environmental monitoring system that leverages the latest IoT capabilities. The 4.4" screen allows you to instantly see the latest readings and all the data is synced in real-time using the built in mobile data* and WiFi. The embedded RS485* interface and external probes allow it to be used in the most extreme conditions and you can access your data anywhere in the world via our App or website.

Online/Offline Access



The WS1 Pro continuously monitors environmental conditions and syncs the data to the UbiBot® IoT Platform. Users are then able to access the data remotely using our App or website.



If there's no network available, the WS1 Pro continues to monitor the environment and stores the data in its large internal memory. You are then able to manually sync the data over USB, or WiFi AP.

Main Features



Temperature Sensor

Precision $\pm 0.3^{\circ}\text{C}$
Range $-20 - 60^{\circ}\text{C}$
 $-4 - 140^{\circ}\text{F}$



Humidity Sensor

Precision $\pm 3\% \text{RH}$
Range $0 - 100\%$



Ambient Light Sensor

Precision $\pm 2\%$
Range $0.01 - 83\text{K lux}$



External Temperature Probe

Precision $\pm 0.5^{\circ}\text{C}$
Range $-55 - 125^{\circ}\text{F}$
 $-67 - 257^{\circ}\text{F}$



RS485 Interface *

suitable for external probes such as soil pH, CO₂ and wind speed

Parameters

Net Weight: 143g \pm 3g

Dimensions: 126mmx 86mmx 22.5mm

Screen Size :104mm \times 50mm (4.4")

Material: flame-resistant ABS+PC

Power: 4 x AA batteries / Micro USB (5V/2A)

Ports: 2 x Micro USB^①

Built-in Memory: >300,000 sensing records

WiFi Supports: 2.4GHz (channels 1-13)

Supports Micro SIM card (15x12x0.8mm)

Export Methods: WiFi, Mobile Data*, USB, WiFi AP

Accessories: 1 \times USB cable, 1 \times removable stand

Optimal Working Conditions: $-20 - 60^{\circ}\text{C}$, 10-90%

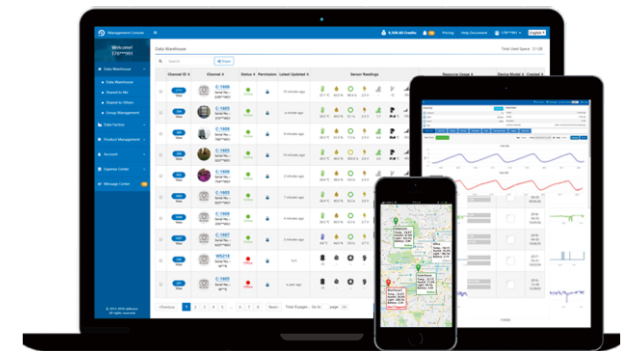
① Micro USB supports DS18B20 Temperature Probe ≤ 2

Smart Alerts



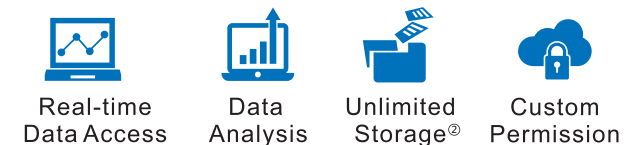
SMS Text Voice Call Email App HTTP

UbiBot® IoT Platform



The Ubibot® IoT Platform offers secure data management, intelligent alerts, unlimited storage and data analysis. Get deep insights into your environment via our app or website. Receive real-time notifications when any measurement goes outside the range you set. We also open up our RESTful API, offering you the chance to develop your own monitoring solutions.

Platform Features



② Any device user gets 1GB free storage and 5GB data traffic

⚠ Starred texts are optional features depending on model purchased